

# RFM

## THE MIDLANDS MART

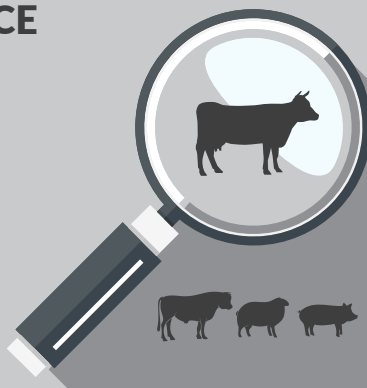
— RUGBYFARMERSMART.COM —

The Charolais Pavilion, Avenue M, Stoneleigh Park,  
Kenilworth, Warwickshire CV8 2RG  
02476 697731 | [www.rugbyfarmersmart.com](http://www.rugbyfarmersmart.com) | 43/139/8013  
Office hours: Monday to Friday - 9.00am - 5.00pm  
Opening Time: Gates open at 5.30am until further notice

## MARKET REPORT FOR MONDAY 19th JUNE 2023

### MARKET AT A GLANCE

Prime Steers to 332p/kg & £2099  
Prime Heifers to 330p/kg & £1953  
Prime Bulls to 300p/kg & £2283  
OTM Cows to 235p/kg & £2280  
Lamb SQQ 310p/kg (1443 Avg  
£131.50)  
Lambs to 384p/kg & £166  
Hogg SQQ 253p/kg (413 Avg £110)  
Hoggs to 313p/kg & £156  
Ewes to £180 (962 Avg £115)



**THURSDAY 13TH JULY**  
SALE OF STORE CATTLE,

Catalogues & Entry Forms available by post, email or on the website  
[www.rugbyfarmersmart.com](http://www.rugbyfarmersmart.com) | [admin@rugbyfarmersmart.com](mailto:admin@rugbyfarmersmart.com)

## CATTLE: 101 FORWARD



Another tidy entry on numbers with a more commercial show forward certainly lacking the best end in the clean. The heat wave taking the edge off trade with the public appetite moved away from the roast beef and onto salads

Trade would be a touch easier on the week but no comparison to the larger easing other outlets have seen.

Top today in the Steers was G R Fountaine and Son at 332ppk with a smashing 25 month old Limousin cross

F Hodgkin topped in the lump at £2098 again with a Limousin Steer

Honesberie Farms had a nice show of Limousin Bulls coming to £2283 and £2202

In the Heifers our own Cecil Thomas topped at 330ppk with a British Blue and DTP & PA Walters topped the lump at £1953 with a Limousin

Cows topped at 235ppk from D J Hull & Partners

More Cattle wanted each week to meet demand

*Auctioneer: Emma Coupland (07808 271218)*

## Len Eadon 1999-2022 Tribute page

<https://leneadon.muchloved.com/?fbclid=IwAR1QM9qsvxqscmyehDUwuJvjrR4KICliDqyezWbDYBEAsDaB164bZn50g4>

### *Photograph Request*

***Rugby Primestock Society are after any old pictures from past Rugby Primestock Shows for this year's 50th anniversary.***

***please could copies be emailed to Sophie admin@rugbyfarmersmart.com or sent to the market office. We can scan the photos and return the originals.***

## STEERS & BULLS

Top prices per Head				FA
Limousin (Bull)	804kg	£2283	Honesberie Farms	Y
Limousin (Bull)	734kg	£2202	Honesberie Farms	Y
Limousin (Bull)	810kg	£2187	A J Smith Farming	Y
Limousin x	702kg	£2098	F Hodgkin	Y
Limousin x	688kg	£2070	F Hodgkin	Y

Top prices per Kilo				
Limousin x	622kg	332ppk	G R Fountaine & Son	Y
Limousin x	688kg	301ppk	F Hodgkin	Y
Limousin x	636kg	300ppk	G Hutsby & Son	
Limousin (Bull)	734kg	300ppk	Honesberie Farms	Y
Limousin (Bull)	648kg	300ppk	Honesberie Farms	Y

## HEIFERS

Top prices per head				FA
Limousin x	630kg	£1953	DTP & PA Walters	Y
Limousin	596kg	£1925	J & R Lowe	Y
Limousin	608kg	£1921	G R Fountaine & Son	Y
Limousin x	598kg	£1901	L W Howe	Y
Limousin	614kg	£1897	J & R Lowe	Y
Top prices per kilo				
British Blue	572kg	330ppk	C W Thomas	Y
Limousin	596kg	323ppk	J & R Lowe	Y
Limousin x	598kg	318ppk	L W Howe	Y
Limousin	608kg	316ppk	G R Fountaine & Son	Y
Limousin	530kg	315ppk	L W Howe	Y

## Prime Cattle & Cows arriving late

We reserve the right to remove the commission cap off cattle that arrive after 8:30am on a Monday.

Please could you ensure you also book them in with one of the numbers on the back page.

Many thanks

## COWS

Top prices per head Cows				FA
Angus	704kg	£1654	D J Hull & Partners	Y
Limousin x	752kg	£1639	D J Hull & Partners	Y
Hereford	768kg	£1612	D J Hull & Partners	Y
Top prices per kilo				
Angus	704kg	235ppk	D J Hull & Partners	Y
Limousin x	752kg	218ppk	D J Hull & Partners	Y
Simmental	704kg	217ppk	Woods Farm Meriden Ltd	

## SPRING LAMBS: 1443 FORWARD SQQ 310 P/KG AVG £131.50



A much improved yarding of Lambs with quality improved throughout as Farmers ensure full meat. In return an unforeseen increase in trade with an SQQ of 310p/kg, albeit quality improvement a major factor. Top today for Shape with Beltex from GR Fountaine & Son to 384p/kg whilst similar quality from W R Eales & Son saw 38kg to 361p/kg with Webb Bros 358p/kg. Fountaine 42kg to 355p/kg. Heavies very much in vogue and wanted throughout. Top today 49kg at 328p/kg from Webb Bros whilst Ted Taylor 48kg to 323p/kg and Messrs Dewes 49kg 320p/kg equal with D Ofield. An all in Avg £131.50 including Rare breeds and Cade Lambs. Export weights in the lump topping at £149 for 42kg from Messrs Fountaine whilst D Ofield 45kg to £148 and E H Dewes 44kg at £147. Overall Ted Taylor with the weight and the shape selling to £166 for 55kg and J & R Lowe 51kg to £162 whilst Messrs Webb 49kg to £160.50.

Trade responding to quality although overall Sales remaining slow on the year as proven by last weeks Farmers Weekly Advert. Quality though always easiest sold with the quality of Spring Lambs Nationally being poor at the beginning of the season due to weather conditions.

*Auctioneer: Thomas Wrench*

Sunday lairage is now open from 9am-3:00pm  
Gates close 3:00pm **STRICTLY.**

## SPRING LAMBS SQQ 310p/kg

Char	37.00kg	384ppk	G R Fountaine & Son
Texel	38.00kg	361ppk	W Eales & Son
Suffolk	39.00kg	359ppk	DJ & ST Webb
Char	42.00kg	355ppk	G R Fountaine & Son
Char	37.00kg	351ppk	BJ & IS Wain

### Per HEAD

Char	42.00kg	£149.00	G R Fountaine & Son
Char	45.00kg	£148.00	D A Ofield
Char	44.00kg	£147.00	EH Dewes & Sons
Texel	45.00kg	£145.00	DJ & ST Webb
Char	42.00kg	£145.00	G R Fountaine & Son

### Per Kilo **over 45kg**

Suffolk	49.00kg	328ppk	DJ & ST Webb
Char	48.00kg	323ppk	E J Taylor & Son
Char	49.00kg	320ppk	EH Dewes & Sons
Char	46.00kg	320ppk	D A Ofield
Char	46.00kg	320ppk	J R Morris

### Per HEAD

Char	55.00kg	£166.00	E J Taylor & Son
Texel	51.00kg	£162.00	J & R Lowe
Suffolk	49.00kg	£160.50	DJ & ST Webb
Texel	53.00kg	£160.00	J & R Lowe
Char	58.00kg	£160.00	E J Taylor & Son

**\*\*FAT CATTLE TIMINGS\*\***  
**COWS 8:30AM**  
**PRIME CATTLE 9AM**



**SHEEP: 2860 FORWARD**  
**PRIME HOGGS: 413 FORWARD**  
**SQQ 253 P/KG AVG £110**

Still a fair few about but many like the wounded warriors. Those with meat an amazing trade to 313p/kg and 296p/kg for 50kg from C McMillan and £156 from C Timms.

Meat is the Key. TEETH UP SHEEP REMAIN ILLEGAL TO SELL IN FULL CARCASS FORM IN GB. THIS IS DUE TO FSA STANDARDS. TO SELL SHEEP WITH ERUPTED TEETH FALLS UNDER THE MIS-DESCRIPTIONS ACT AND THEREFORE VENDORS ARE LIABLE FOR ANY DISCOUNTS. PLEASE MARK ANY SHEEP WITH TEETH MISSING!

*Auctioneer: Thomas Wrench*

PRIME HOGGS SQQ 253 p/kg			
Per Kilo <b>under 45kg</b>			
Char	39.00kg	313ppk	C McMillan
Char	40.00kg	290ppk	RBJ Tofield
Char	36.00kg	289ppk	D W Gurney & Son
Char	41.00kg	283ppk	L Dallow
Char	40.50kg	281ppk	TI & GM Edmunds & Partners
Per HEAD			
Char	39.00kg	£122.00	C McMillan
X Breed	45.00kg	£120.00	MC & M Peebles
Char	45.00kg	£120.00	C McMillan
Texel	44.50kg	£119.50	Hopcraft Bros
Char	44.50kg	£119.00	DW Gurney & Son
Per Kilo <b>over 45kg</b>			
Char	50.00kg	296ppk	C McMillan
Char	49.00kg	286ppk	K Taylor
Char	53.00kg	284ppk	R Griffin
Char	51.00kg	275ppk	PA & A Hodges
Char	47.00kg	274ppk	TI & GM Edmunds & Partners
Per HEAD			
Char	67.00kg	£156.00	C Timms
Char	53.00kg	£150.50	R Griffin
Char	70.00kg	£150.00	TI & G M Edmunds & Partners
Char	71.00kg	£150.00	T J Perkin
Char	55.00kg	£149.50	DW Gurney & Son

## CULL EWES: 962 FORWARD



A nice number yarded but no real quality throughout with mainly run of the Mill or super lean Ewes on show. All buyers in attendance but no shortage of Ewes nationally. Top today £180 for Texel x from Messrs Wain. White Faces with weight generally £160 plus. Suffolks to £141.50 for PL & L A Gibbs and meat Suffolks generally £130 plus. Mules to £119 for Leam Farms and Messrs Wright. Mules generally all over £110 if meated.

**Auctioneer: Thomas Wrench**

## EWES

Texel	£180	BJ & IS Wain	X Breed	£165	C J Mitchell
Char	£169	BJ & IS Wain	Char	£165	R J Brendon
Texel	£166	P & L A Gibbs	Texel	£162	R F Staveley Ltd



## Pete Smith Memorial Match



**Bitteswell Legends v Andy Smith Allstars**

*Sunday 2nd July  
from 11am*



BAT	TOTAL	BAT
1st INNS	WKTS	OVERS



- Ground Naming
- Music
- Hot Food
- Bar
- Junior Game
- Club History & Photos
- Bouncy Castle
- Raffle
- Plus Much More!



# Farm insurance, the way it should be

We're a family-run business and pride ourselves on forging long term relationships with our farming and agricultural clients. Covering the Midlands, South West and South East, we deliver an extensive range of farm, agri business and equine policies tailored to you.

Farm & Equine **01865 290915**

General **01865 844998**

 Follow us **@County\_Farm**

[www.county-insurance.co.uk/farms](http://www.county-insurance.co.uk/farms)



Independent Insurance Brokers County Insurance Services Limited. Address and Registered Office: County House, Glyme Court, Langford Lane, Kidlington, Oxon OX5 1LQ. Authorised and regulated by the Financial Conduct Authority (FCA) (FRN: 597267). Company registered in England No. 08411634



## STORE LAMBS: 42 FORWARD

”

Being the time of year not many Store Lambs were expected, though Messrs MR Grindal & Son topped with Charollais lambs at £102

Other highlights were Messrs JB & RL Cook selling Suffolk's to £94

T  
**Auctioneer :*Tim Webster***

### FOR SALE

Pedigree Limousin bull, Homozygous Polled F94L F94L, 16 months old. Higher Health and BVD free and vaccinated. Lightly used on heifers. Greensons Howlett and Danish lines. 100% polled calves to any cow.

Jessica Semple 07903890940



**NEXT STORE CATTLE SALE  
THURSDAY 13TH JULY  
ENTRIES NOW BEING TAKEN**



## **Have Wool Laurence Pierce (Wool Merchants)**

**One of Irelands largest and best known wool buyers require 2023 Wool Clips**

**Please contact your local Agent:**

**Mr Steve Eales, Brookhill Farm,**

**Peatling Magna, Leicestershire, LE8 5UQ**

**Tel: 07732 213278**

**Wool intake from June to September**

**Bags are available for collection from farm**

**Speedy Payment in Full**



### **AUTO GATES LTD**

**Bridge Farm, Holt Lane, Ashby Magna, LE17 5NJ**

**Trevor 07498993897/01455 202791**

**Email: [tjautogate@gmail.com](mailto:tjautogate@gmail.com)**

**Fitted to new or existing gates, wood or steel automated.**

**Sliding, swinging or cantilever.**

# **HARRIS & CLARKE**

## **CHARTERED ACCOUNTANTS**

***...Specialising In Agriculture...***

**Our team of staff has many years of experience in dealing with the accountancy and taxation affairs of farmers, landowners and agricultural contractors**

**For further information or a free no obligation meeting please contact**

**John Harris**

**7 Billing Road, Northampton, NN1 5AN  
Telephone 01604 622274  
[www.harrisandclarke.co.uk](http://www.harrisandclarke.co.uk)**



**SALES / LETTINGS / COMMERCIAL / FARM & RURAL  
PLANNING & DEVELOPMENT / AUCTIONS**  
[howkinsandharrison.co.uk](http://howkinsandharrison.co.uk)

**HOWKINS &  
HARRISON**

**Collective machinery sale on behalf of Mr A Baughan & others.  
Oak Farm, Upper Boddington, Nr Daventry, Northamptonshire, NN11 6DW.**

**ENTRIES ARE INVITED**

**To include: Tractors, telehandlers, diggers, trailers, farm machinery,  
grassland, arable and general farm machinery & building materials.**

**Together with: Excavators, dump trucks,  
mini diggers, telehandler and loader attachments, bowsers,  
generators & agricultural requisites.**

**Plus: Livestock equipment, workshop equipment, agricultural equipment & rural bygones.**

**For an Entry Form or more information please contact Gilly on 07921 511852.**

**To Be Sold by Auction on Saturday 8th July 2023 at 10.30am.**

**TELEPHONE 01788 564746 | 07921 511852  
EMAIL [dispersal.sales@howkinsandharrison.co.uk](mailto:dispersal.sales@howkinsandharrison.co.uk)  
7-11 Albert Street, Rugby, CV21 2RX**



# CALF SALES 2023

JUNE 12TH & 26TH  
JULY 10TH & 24TH  
AUGUST 7TH & 21ST  
SEPTEMBER 4TH & 18TH  
OCTOBER 2ND, 16TH & 30TH  
NOVEMBER 6TH & 20TH  
DECEMBER 4TH & 18TH



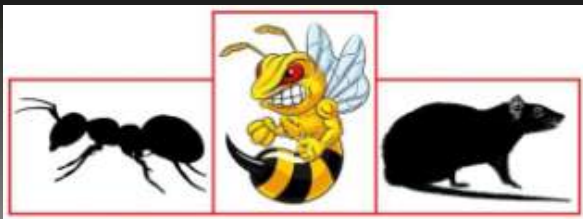
CONTACT 02476697731 OR EMAIL [ADMIN@RUGBYFARMERSMART.COM](mailto:ADMIN@RUGBYFARMERSMART.COM)  
TO BOOK IN YOUR ENTRIES

# BREEDING SHEEP SALES

**JULY 28th** First Annual Breeding Sheep Fair  
**AUGUST 25th** Breeding Sheep Fair Plus NSA Ram Sale  
**SEPTEMBER 16th** Ewe Lamb & Wiltshire Horn Show & Sale  
**SEPTEMBER 29th** Annual Ram Fair including Breeding Sheep



CONTACT 02476697731 OR EMAIL  
[ADMIN@RUGBYFARMERSMART.COM](mailto:ADMIN@RUGBYFARMERSMART.COM)  
TO BOOK IN YOUR ENTRIES



# RDB Pest Control

Reliable | Trustworthy | Fast | Effective  
Competitive Prices

**Ryan Brunt**

**07922 091 459**

**[www.rdbpestcontrol.co.uk](http://www.rdbpestcontrol.co.uk)**

## **Why You Should Choose Us**

- ✓ Cater for Red Tractor and Farm Assurance Schemes
- ✓ Wide ranging experience on Farms with over 25 existing routine agricultural clients
- ✓ Fully qualified - RSPH Level 2 in Pest Control
- ✓ Trustworthy and security vetted
- ✓ Prompt, reliable fast response

## **A selection of sites where I have experience:**

Farmers Market • Local Airport • Farms • Warehouses •  
Industrial Estates • Food Premises • Private Houses • Country  
Estates • Building Sites • Local Councils • Schools •  
Day Nurseries • Care Homes

# WE COVER SMALL FARMS, LARGE FARMS AND EVERYTHING IN BETWEEN



From sheep farmers to arable farmers.  
Flower growers to poultry farmers.

NFU Mutual is proud to insure over 75% of UK farms with our Farm Select insurance. But we want more farms to benefit from great cover and local service. NFU Mutual has introduced Farm Essentials insurance – designed to meet the needs of smaller farms.

As your local agency, we are close by and can provide expert advice and hands-on support when you need it.

Call **Coventry Office** on **02476 444519**

NFU Mutual, 6 Eastwood Business Village,  
Harry Weston Road, Binley Business Park,  
Coventry, CV3 2UB



**NFU Mutual**  
FARM INSURANCE

# 50 Years of the Rugby Primestock Society

DATE FOR YOUR DIARY  
FRIDAY 1ST DECEMBER 2023, STONELEIGH PARK

**RFM**  
THE MIDLANDS MARKET

## STORE CATTLE SALES 2023



JULY 13TH  
AUGUST 10TH  
SEPTEMBER 14TH  
OCTOBER 12TH & 19TH  
NOVEMBER 2ND, 9TH & 23RD  
DECEMBER 14TH



+

STORE LAMBS

CONTACT 02476697731 OR EMAIL [ADMIN@RUGBYFARMERSMART.COM](mailto:ADMIN@RUGBYFARMERSMART.COM)  
TO BOOK IN YOUR ENTRIES



**THE MIDLANDS MART**

---

RUGBYFARMERSMART.COM

---

## **FORTHCOMING SALES**

**THURSDAY 13TH JULY  
SALE OF STORE CATTLE**

**Vendors who are wishing to sell stock  
please feel free to contact:**

**Tom Wrench** - 07774 723758 Market Manager & Auctioneer

**Tim Webster**- 07437 101163 Auctioneer & Fieldsman

**Emma Coupland**- 07808 271218 Fat Cattle Auctioneer

**Charlie Betteridge**- 07760266701 Fieldsman

**Nathan Shaw**-07460120293 Yard Manager

who will gladly make

**A FREE ON FARM VISIT & VALUATION**



**Follow us on social media:**

Facebook & Twitter - @RFMMidlandsMart

Instagram - rugbyfarmersmartLtd